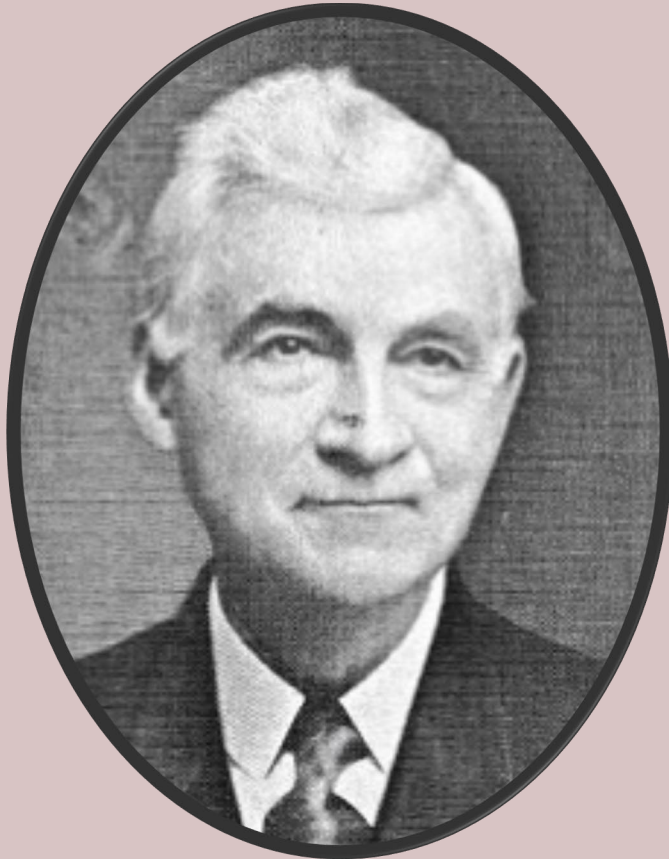


AMERICAN HERITAGE GRAPES

Midwest Breeders 1800s

Munson



Hussman



Jaeger



Thomas Volney Munson's contributions to viticulture



1845- 1913

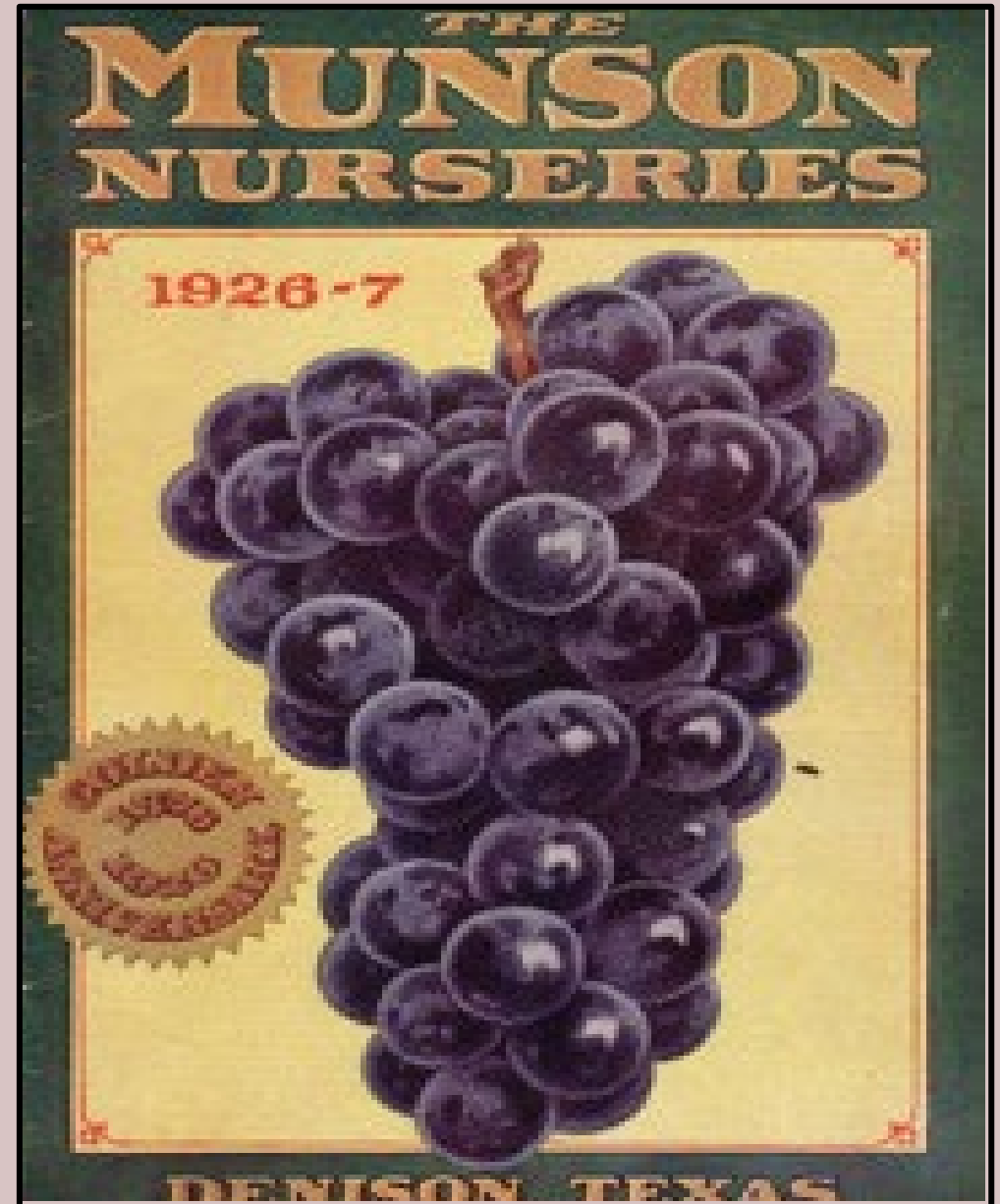
- Wine grapes
- Rootstocks during phylloxera
- Worked with other breeders
- Relevant today

Foundations of American Grape Culture



Parent Grapes

- **Lenoir**
- **Herbemont**
- **Neosho Hybrids**
- **native selections**
- **Delaware**
- **Catawba**
- **Norton**





Whit's data

- 3 year study in KCMO
- Conventional spray program
- Viticultural & enological observations & experiments
- 30 Munson varieties

ALBANIA

TEN DOLLAR PRIZE X NORTON X HERBEMONT

- White wine
- Similar to: Italian Verdicchio
- Wine Chemistry: 11.3% ABV pH 3.35 TA 6.4 g/L
- Yields: High
- Not yet an accepted varietal designation according to the TTB!





BRILLIANT & CAPTIVATOR

LINDLEY X DELAWARE

HERBERT X MELADEL

- White wine & frizzante wine
- Similar in texture to Catawba
- Harvest Chemistry: 19 Brix pH 3.04 TA 7.5 g/L
- Low ABV wine
- Competitor against hard seltzer?



CLOETA

AMERICA (SEEDLING OF JAEGER) X R.W.MUNSON

- Red Wine
- Similar to: Beaujolais(French Gamay) & Chambourcin
- Wine Chemistry: 12% ABV pH 3.8 TA 7.8 g/L
- Great tannin and fruity aroma



DELICATESSAN

R. W. MUNSON X DELICIOUS (HERBEMONT
HYBRID)

- Dark Red Wine
- Similar to: Petite Syrah-ish
- Wine Chemistry: 11.2% ABV pH 3.5 TA 7.6 g/L
- Low vigor = clean fruit = sustainability!
- Very productive



ELLEN SCOTT

ARMLONG X HERBEMONT

- White wine
- Similar to: Alsatian Pinot Gris
- Wine Chemistry: 10.7% ABV pH 3.32 TA 8.9g/L
- Named after Munson's wife
- Huge clusters, very productive



HIDALGO

DELAGO X BRILLIANT

- Ageable full bodied white wine
- Similar to: French Marsanne/Roussanne blends
- What's a Chardonnay drinker to buy at a Missouri winery?
- Wine Chemistry: ABV10.8% pH 3.6 TA 6.3 g/L
- Big clusters, big vigorous vine



LOMANTO

SALDO X PENSE

- Very dark red wine
- Similar to: ??
- Low ABV 8.2% High pH 3.4 TA 7.8 g/L
- Low vigor = nice clean fruit
- Productive!



WETUMKA

ELIVIRA X HERBEMONT X GOLD COIN

- White, fortified, and sparkling wine
- Similar to: Vignoles
- Wine Chemistry: ABV 9% pH 3.4 TA 9.6g/L
- Great disease resistance



LENOIR

CAB FRANC X BERLANDIERI X RUPESTRIS X RIPARIA

- The grape of many names
- Allowed in Chateauneuf-du-Pape!
- Similar chemistry to Norton
- Small berries, big long loose clusters
- Lots of color & tannin



Where are they?



TV Munson Memorial Vineyard

- Grayson College in Denison, (TX) -dormant cuttings
- Fairhaven Nursery (TX) -vines
- Foundation Plant Services at UC Davis (CA) -certified virus free vines
- Others TBD



Whitney Ryan
Enology Associate
Grape & Wine Institute
wryan@missouri.edu



Questions?